



# ALUMINUM SHIELD

## SYSTEM II

### EXCLUSIVELY FOR METAL ROOFS

#### WHAT IS THE ALUMINUM SHIELD SYSTEM II?

The ALUMINUM SHIELD SYSTEM II is a superior waterproofing system that protects your valuable metal roof from leaks and rust by the addition of a special rust preventative component to ensure long life. ALUMINUM SHIELD SYSTEM II is not simply a coating. It is a system which has been specifically designed for the very special needs of metal roofs. The ALUMINUM SHIELD SYSTEM II is a combination of three easy-to-use products which, used together, form an actual aluminum shield over metal roofs to waterproof, prevent rust and corrosion, insulate, beautify and protect.

#### WATERPROOFS

To waterproof metal roofs, the ALUMINUM SHIELD SYSTEM II has been specifically designed to accomplish this in a simple, straight forward manner. The following products, used as recommended, will provide a beautiful leak-free roof for years:

1. QUICK-DRY ANTI-OXIDENE COATING to stop rust and corrosion in its tracks.
2. TEXOTROPIC FIBERED ALUMINUM ROOF COATING for application on fastener heads and, where needed, ALUMINUM QUICK-PATCH to seal seams and protrusions.
3. ALUMINUM ROOF COATING or TEXOTROPIC FIBERED ALUMINUM ROOF COATING for a gleaming, protective coat of aluminum over the entire roof surface.

#### STOPS RUST AND CORROSION

The first step in the ALUMINUM SHIELD SYSTEM II consists of thoroughly coating the roof with Texas Refinery's QUICK-DRY ANTI-OXIDENE. Applied as directed, it stops rust and corrosion immediately. Rust and corrosion are powerful enemies of a metal roof. Eventually all metal roofs will rust and corrode to the point of complete deterioration if left untreated. If rust and corrosion are a problem, QUICK-DRY ANTI-OXIDENE is the answer.

If rust and corrosion have yet to begin forming on a metal roof, the ALUMINUM SHIELD SYSTEM II will prevent it from starting. If rust and corrosion have already started, the ALUMINUM SHIELD SYSTEM II stops these destructive forces from doing further damage.



**BEFORE**

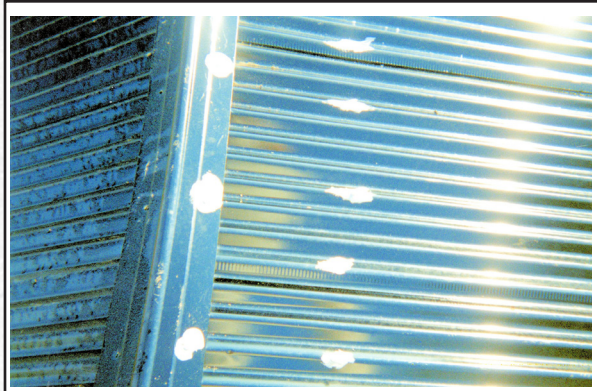
*This unique three step recovery program waterproofs and protects industrial, commercial, educational and agricultural metal roofs for years.*

- **Waterproofs**
- **Stops Oxidation**
- **Insulates**
- **Reduces Roof Movement**
- **Beautifies**
- **Easy to Apply**





*Cleaning can be done with pressure air, detergent or chemical wash, wire brush or whatever process is available. QUICK-DRY ANTI-OXIDENE COATING is easily applied to the roof by spray, brush or roller.*



*The QUICK-DRY ANTI-OXIDENE needs to dry for only a few hours before proceeding to sealing fastener heads with TEXTOTROPIC FIBERED ALUMINUM ROOF COATING.*



*All fastener heads on this section of roof have been sealed with TEXTOTROPIC FIBERED ALUMINUM ROOF COATING. ALUMINUM QUICK-PATCH is used to seal seams and protrusions where necessary.*



*A beautiful cover of ALUMINUM ROOF COATING or TEXTOTROPIC FIBERED ALUMINUM ROOF COATING completes the job for ultimate protection.*

## REPAIRS AND PREVENTS LEAKS

The ALUMINUM SHIELD SYSTEM II is specifically designed to waterproof metal roofs. This is accomplished by using TEXTOTROPIC FIBERED ALUMINUM ROOF COATING to seal around fastener heads. TEXTOTROPIC is packaged in 6 gallon pails and can be applied using a paint brush or small mop. ALUMINUM QUICK PATCH in 3" wide rolls is recommended to seal and waterproof any vertical or horizontal metal seams or protrusions in the roofs surface.

## EASY TO APPLY

The ALUMINUM SHIELD SYSTEM II is so fast and easy to apply that it is ideal for do-it-yourself applications. No expensive labor is required. It's truly one-two-three. (1) QUICK-DRY ANTI-OXIDENE COATING is applied. (2) Next TEXTOTROPIC FIBERED ALUMINUM ROOF COATING is applied to fastener heads and, where needed, ALUMINUM QUICK-PATCH is used to seal separated seams and protrusions. And, (3) ALUMINUM ROOF COATING or TEXTOTROPIC FIBERED ALUMINUM ROOF COATING is applied to the entire roof. It's that fast, easy, effective and economical!

## INSULATES

The ALUMINUM SHIELD SYSTEM II provides a gleaming, protective coating of aluminum over the entire roof surface, reflecting up to 80% of the sun's ultraviolet rays away from the roof surface. Unlike most insulating materials which retard heat after it has penetrated the roof, the ALUMINUM SHIELD SYSTEM II stops heat before it even enters the roof system. This means cooler interiors and lower air-conditioning costs.

## REDUCES ROOF MOVEMENT

With the ALUMINUM SHIELD SYSTEM II, roof surfaces are maintained at the same relative temperature. This helps eliminate thermal shock which causes expansion and contraction of metal roofs. This reduction in movement means longer life for metal roofs.

## BEAUTIFIES

Even older, rusted metal roofs are restored to like-new brilliance with the ALUMINUM SHIELD SYSTEM II. Pure aluminum flakes give a long lasting, bright finish that enhances property value.

## CONVENIENT

Everything needed for the ALUMINUM SHIELD SYSTEM II, including cleaning products, is available from a single source - Texas Refinery Corp. No heat and no special application equipment is needed. There are no inconvenient delays for curing time. Zero interest credit terms are always available.

## TEXAS REFINERY CORP

FORT WORTH • MOOSE JAW, SASK. • TORONTO, ONTARIO

Exec. Offices: 840 North Main St., Fort Worth, Texas 76164

[www.texasrefinery.com](http://www.texasrefinery.com)

E-mail: [pcsales@texasrefinery.com](mailto:pcsales@texasrefinery.com)

Toll Free: 1-800-827-0711

Toll Free Fax: 1-877-540-7464